

## 1. PROVINCIAL PROFILE



Source: UNDSS Provincial Assessment provided by UNAMA

### 1.1 General Information

#### A. Geography

Logar province is located to the south of Kabul and is surrounded by Nangarhar, Paktya, Kabul, Wardak and Ghazni provinces. The province covers an area of 3955 km<sup>2</sup>. More than one-third (37%) of the province is mountainous or semi mountainous terrain while more than half (58%) of the area is made up of flat land, as the following table shows:

Topography type					
Flat	Mountainous	Semi Mountainous	Semi Flat	Not Reported	TOTAL
57.7%	21.3%	15.5%	4.9%	.6%	100.0%

Source: CSO/UNFPA Socio Economic and Demographic Profile

The province is divided into 7 Districts. The provincial capital is Puli Alam which has a population of about 88886 inhabitants.

#### B. Demography and Population

Logar has a total population of 322704 there are 44209 households in the province and households on average have 8 members. The following table shows the population by district.

Population by Districts			
District	Number of males	Number of females	Total population
Puli Alam	44675	44211	88886
Baraki Barak	39575	38488	78063
Charkh	20449	20045	40492

## Logar

<b>Khushi</b>	7608	7519	15127
<b>Mohammad Agha</b>	29919	29060	58979
<b>Khar war</b>	13359	13248	26607
<b>Azre</b>	7485	7065	14550
<b>Total</b>	163070	159634	322704

**Source: CSO/UNFPA Socio Economic and Demographic Profile**

Just under three quarters (72%) of the population of Logar lives in rural districts while 28% lives in urban areas. Around 51% of the population is male and 49% is female. About two thirds of villages and 60 % of the population speak Pashto and one third of villages and 40 % of the population speak Dari.

Logar province also has a population of Kuchis or nomads whose numbers vary in different seasons. In winter 96,280 individuals, or 4% of the overall Kuchi population, stay in Logar living in 29 communities. Among them 6% are short-range and 94% are long-range migratory. In both categories, 61% of kochi population in Logar are non migratory. The most important summer areas for the short-range migratory Kuchi are Pul Alam and Khar War districts of Logar province. The most important summer area for the long range migratory Kuchi is in Wardak province. Kuchi from different provinces migrate into Logar during the summer, from the provinces of Nangarhar, Khost, Kunar, and Laghman (in decreasing order of importance). During summer the Kuchi population figures rise to 208.339 which makes Logar the province with the second highest number of Kuchi in the summer after Kabul.

## C. Institutional framework

The following government agencies have Line Department offices in the province:

<b>Major Provincial Directories in Logar Province</b>			
<b>S. No</b>	<b>Directories</b>	<b>S. No</b>	<b>Directories</b>
1	Economy	9	Refugees & Returnees
2	Rural Rehabilitation & Development	10	Municipality
3	Agriculture	11	Red Crescent
4	Health	12	Social Services, Disable
5	Information & Culture	13	Electricity
6	Education	14	Culture and Youths
7	Public Works	15	Communication
8	Women Affairs	16	Sports

**Source: UNAMA**

In total the government employs 5174 people in Logar province. As the table below shows, 61% of these are employees and 39% are contract workers. Nearly all (91%) of government workers are men and 9% are women.

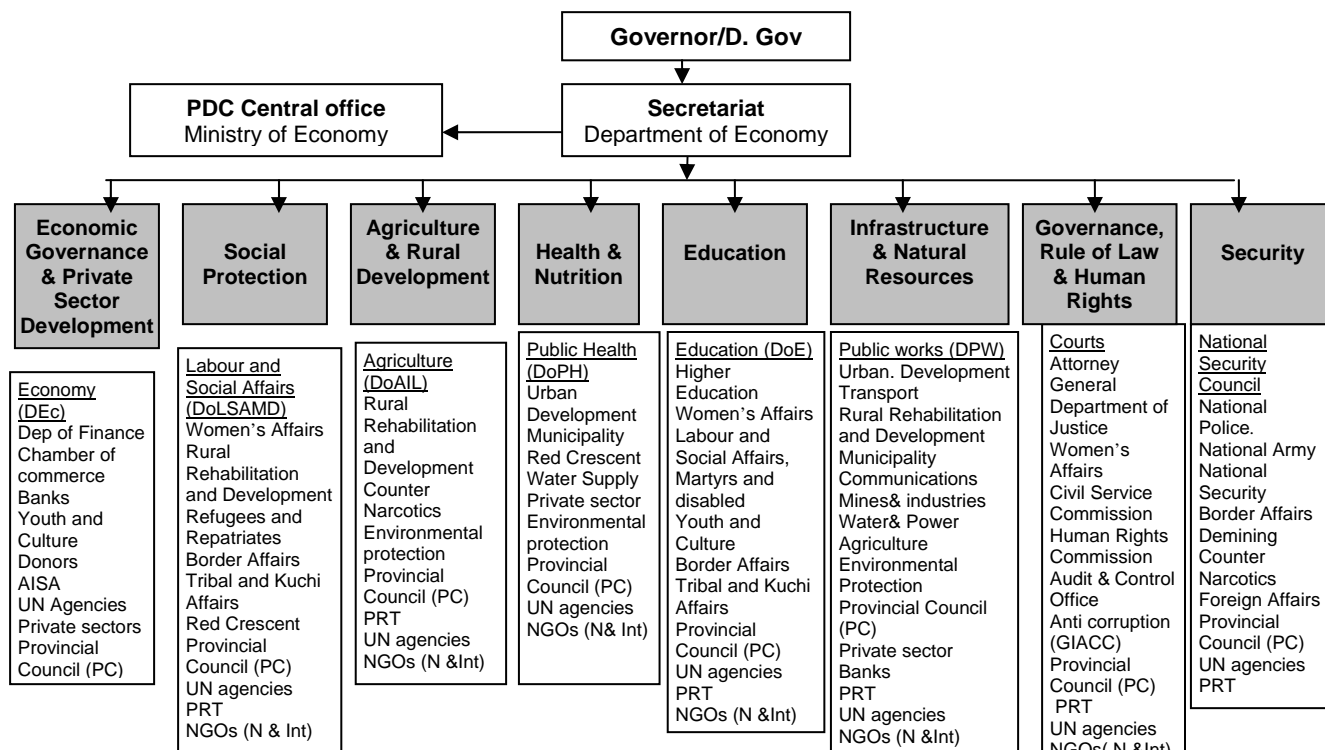
<b>Number of people employed by government</b>			
	<b>Male</b>	<b>Female</b>	<b>Total</b>
<b>Contract workers</b>	1948	46	1994
<b>Employees</b>	2757	423	3180
<b>Total Workers</b>	4705	469	5174

**Source: CSO Afghanistan Statistical Yearbook 2006**

## Logar

Each province has a Provincial Development Committee (PDC) which is responsible for overseeing the progress made on implementation of the Provincial Development Plan, and which will lead the provincial development planning process in the future. The PDC involves all government line departments and other key stakeholder groups involved in development activities in the province. It also has a number of working groups devoted to different sectors, each of which should be chaired by the director of the core responsible line department. The structure of the PDC and its associated working groups approved by the Ministry of Economy for use in all provinces is shown in the diagram below:

### Provincial Development Committee Structure endorsed by Ministry of Economy



Source: Ministry of Economy

The Provincial Development Committee in Logar province was formed in early 2006. In April 2007 UNAMA made the following assessment of the PDC in Logar:

UNAMA assessment of Provincial Development Committee in Logar	
Supporting Agencies	Functioning Status of PDC meetings
UNAMA , PRT, Some UN agencies and NGOs	Sectoral departments, NGOs, UNAMA, PRT and some UN agencies including the governor attend monthly meetings regularly. Some sectoral pilot working groups have been established.

Source: UNAMA, April 2007

Logar also has a number of other bodies which play an active role in development planning at the local level. There are 427 Community Development Councils in the province which are active in development planning at the community and village level. The following table shows the number of CDCs active in each district:

Number of CDCs by District	
District	Number of CDCs
Pul Alam	111
Charkh	12
Baraki Barak	98
Khushi	35
Muhammad Agha	119
Azra	52
<b>TOTAL</b>	<b>427</b>

Source: MRRD, National Solidarity Program (NSP)

## D. Donor Activity

In addition to the activities of government agencies, a number of national and international organizations play an active role in promoting development in the province. For example 5 UN agencies are currently involved in reconstruction and development projects in different parts of the province. These are shown in the following table:

UN Operations in Logar Province		
Agency	Project	Location
<b>UNICEF</b>	Education, children protection, water, sanitation and health	All Logar districts
<b>WFP</b>	Food for education, support for schools, food for TB patients, winterization and emergency helps	Mohammad Agha, Pul Alam, Khoshi, Charkh, Kherwar
<b>FAO</b>	Irrigation and fertilizers distribution for farmers	Bara ki Barak and Pul Alam
<b>UNHCR</b>	Shelter	Mohammad Agha, Pul Alam and Khoshi
<b>UNFPA</b>	Training for gynaecologic midwives	Pul Alam, Azrah and Kherwar

Source: UNAMA

There are also at least 12 national and international Non-Governmental Organizations (NGOs) supporting development projects across a range of sectors in the province, as the following table shows:

International and National NGO Operations in Logar Province		
Organization	Project	Location
<b>Care International</b>	Education program and Solidarity program	Mohammad Agha
<b>COAR</b>	Education and agriculture programs	Bari ki Barak, Pul Alam, Charkh, Mohammad Agha and Khoshi
<b>IRC</b>	Education and solidarity programs	Bari ki Barak, Pul Alam, Charkh, Mohammad Agha, Azrah and Khoshi
<b>Malteser</b>	Vocational training and wages for work	Bari ki Barak, Pul Alam, Azrah and Mohammad Agaha
<b>MRCA</b>	Health	In all districts
<b>Belgium Solidarity</b>	Basic education, vocational and agriculture	Bari ki Barak, Charkh, Pul Alam, Mohammad Agha and Khoshi
<b>SARS</b>	Shelter and vocational training	Bari ki Barak, Pul Alam, Mohammad Agha and Khoshi
<b>BRAC</b>	Micro loans	Bari Ki Barak, Pul Alam and Mohammad Agha
<b>AREA</b>	Support for agricultural cooperatives and construction irrigation dams	Bara ki Barak and Mohammad Agha
<b>ADA</b>	Electricity dams, landscape and cooperatives	Charkh
<b>SDO</b>	Peace and stabilization	

Source: UNAMA

## Logar

The following Non-Governmental Organizations (NGOs) operate as facilitating partners (FPs) for the National Solidarity Program (NSP) in different districts in the province, as the following table shows:

NGOs Facilitating NSP by District	
District	Facilitating Partner
Azra	IRC
Baraki Barak	IRC
Charkh	IRC
Khushi	IRC
Kharwar	IRC
Muhammad Agha	IRC
Puli Alam	IRC
Puli Alam	IRC

Source: MRRD, National Solidarity Program (NSP)

## 1.2 Current State of Development in the Province

### A. Infrastructure and Natural Resources

The provision of basic infrastructure such as water and sanitation, energy, transport and communications is one of the key elements necessary to provide the building blocks for private sector expansion, equitable economic growth, increased employment and accelerated agricultural productivity. In Logar province, on average 45% of households use safe drinking water and the figure is a little higher in rural areas (49%). More than two-thirds (69%) of households have direct access to their main source of drinking water within their community, however more than a quarter (29%) of households have to travel for up to an hour to access drinking water, and for 1% travel to access drinking water can take up to 3 hours as the table below shows:

Time required accessing main source of drinking water				
	In community	Less than 1 hour	1-3 hours	3-6 hours
%	69	29	1	0

Source: NRVA 2005

The following table shows the kinds of toilet facilities used by households in the province

Toilet facilities used by households						
	None/ bush open field/	Dearan / Sahrah (area in compound but not pit)	Open pit	Traditional covered latrine	Improved latrine	Flush latrine
%	10	10	8	72	0	0

Source: NRVA 2005

On average 21% of households in Logar province have access to electricity. Access to electricity is greater in rural area with 28% of households and around one-third of these (10%) have access to public electricity.

The transport infrastructure in Logar is reasonably well developed, with more than three quarters (78%) of roads in the province able to take car traffic in all seasons, and 17% able to

## Logar

take car traffic in some seasons. However, in a small part of the province (5%) there are no roads at all, as shown in the following table:

<b>Road Types</b>				
<b>District</b>	<b>Cars all season</b>	<b>Cars some seasons</b>	<b>No roads</b>	<b>Not reported</b>
<b>Pul Alam</b>	73.0%	23.5%	3.1%	.5%
<b>Baraki Barak</b>	92.4%	3.4%	3.4%	.7%
<b>Charkh</b>	86.7%	13.3%	.0%	.0%
<b>Khushi</b>	46.9%	36.7%	16.3%	.0%
<b>Mohammad Agha</b>	94.6%	2.7%	2.7%	.0%
<b>Khar war</b>	72.2%	27.8%	.0%	.0%
<b>Azre</b>	45.5%	36.4%	18.2%	.0%
<b>Total</b>	77.8%	17.1%	4.8%	.3%

Source: CSO (analysis by AIRD)

## B. Economic Governance and Private Sector Development

Creating the conditions in which a dynamic and competitive private sector can flourish, is key to promoting economic growth, employment creation and poverty reduction. Logar is an agricultural province, and it is rich with minerals such as copper, and chromites. In terms of industry, one textile and one Ainak copper factory are working in the Province. The majority of commercial activities in Logar are related to agriculture, livestock products, trade, and services.

Agriculture is a major source of revenue for just under a third (31%) of households in Logar province, including 39% of rural households. Forty three percent of rural households own or manage agricultural land or garden plots in the province. However, around one-third (30%) of households in rural areas derive income from trade and services. Around half of households in rural areas (46%) earn some income through non-farm related labour. Livestock also accounts for income for one-sixth (16%) of rural households as the following table shows:

<b>Sources of income reported by households</b>			
<b>Source of income</b>	<b>Rural (%)</b>	<b>Urban (%)</b>	<b>Total (%)</b>
<b>Agriculture</b>	39	-	31
<b>Livestock</b>	16	-	21
<b>Opium</b>	0	-	4
<b>Trade and Services</b>	30	-	30
<b>Manufacture</b>	2	-	7
<b>Non-Farm Labour</b>	46	-	29
<b>Remittances</b>	8	-	2
<b>Other</b>	3	-	3

Source: NRVA 2005

In 2005 there were 11 Agricultural cooperatives active in Logar involving 985 members. This was 30% more people than in 2003 when the figure was only 757 members. In 2005 agricultural cooperatives controlled a total of 2681 Ha of land and achieved a surplus of products for sale of 1,000 tons. As a result of this, each member held a share in the capital of the cooperative to the value of 344,900Afs.

## Logar

Industrial crops are produced in 88 of the total 672 villages (13%) in Logar province. Puli Alam, Baraki Barak and Mohammad Agha districts account for more than 90% of villages that produce industrial commodities. The two major industrial crops are tobacco (produced in 53 villages) and sugar extract (produced in 27 villages). About half of the villages producing tobacco are located in Puli Alam, Baraki Barak and Mohammad Agha. More than 92% of the sugar extracts are produced in Puli Alam and Mohammad Agha.

Small industries are scarce in Logar. They exist in only 19 out of the 672 villages. Eleven villages produce honey and four of them are located in Puli Alam, another four in Baraki Barak, two in Mohammad Agha and one in Charkh District.

Handicrafts are not omnipresent either. A small number of villages produce jewelry, and a few others produce pottery. Carpets are produced in only four and rugs in only three villages.

In 2005, 34% of households in Logar reported taking out loans. Of these loans, a small percentage was used to invest in economic activity such as business investment (7%), buying land (1%) and agricultural inputs (1%).

### C. Agriculture and Rural Development

Enhancing licit agricultural productivity, creating incentives for non-farm investment, developing rural infrastructure, and supporting access to skills development and financial services will allow individuals, households and communities to participate licitly and productively in the economy. As agriculture represents the major source of income for around one-third of the households in the province, rural development will be a key element of progress in Logar. The most important field crops grown in Logar province include wheat, maize, alfalfa/clover or other fodder and potatoes. The most common crops grown in garden plots include fruit and nut trees (54%), grapes (39%) and vegetables (8%).

Around three quarters (70%) of households with access to fertilizer use this on field crops and to a lesser degree on garden plots (14%), although nearly one-sixth (16%) of households use fertilizer on both field and garden. The main types of fertilizer used by households in the province are shown in the following table:

Main Types Of Fertilizer Used By Households					
Human	Animal	Urea		DAP	
%	%	%	Average Kg per Household	%	Average Kg per Household
56	53	87	219.0 Kg	83	220.9Kg

Source: NRVA 2005

More than four fifths (84%) of households in the province have access to irrigated land, and 6% of household have access to rain fed land

Households (%) access to irrigated and rainfed land			
	Rural	Urban	Average
Access to irrigated land	84	0	86
Access to rainfed land	6	0	6

Source: NRVA 2005

Eighty five percent of rural households and 69% of Kuchi households in the province own livestock or poultry. The most commonly owned livestock are sheep, cattle, camel and poultry as the following table shows:

Households (%) owning poultry and livestock				
Livestock	Kuchi	Rural	Urban	Average
Cattle	42	62	-	52
Oxen	1	6	-	3.5
Horses	8	-	-	8
Donkey	60	24	-	42
Camel	51	-	-	51
Goats	57	15	-	36
Sheep	79	30	-	54.5
Poultry	52	51	-	51.5

Source: NRVA 2005

## D. Education

Ensuring good quality education and equitable access to education and skills are some of the important ways to raise human capital, reduce poverty and facilitate economic growth. The overall literacy rate in Logar province is 21%, however, while nearly one-third (31%) of men are literate this is true for just under one-tenth (9%) of women. In the population aged between 15 and 24 the situation for men remains stable with 31% literacy but for women the figure shows a small decrease to 8.5%. The Kuchi population in the province has particularly low levels of literacy with just 5.6% of men and 0% of women able to read and write.

On average 22% of children between 6 and 13 are enrolled in school, however, again the figure is around one third (30%) of boys and one eighth (13%) of girls. Amongst the Kuchi population, one in five boys (20%) and no girls attend school in Logar during the winter months. One in fifty Kuchi boys (2%) attend school in the province during the summer.

Overall there are 168 primary and secondary schools in the province catering for 81538 students. Boys account for 75% of students and 75.5% of schools are boys' schools. There are nearly 2082 teachers working in schools in the Logar province, nearly one-fifth of whom around one-fifth is women (18%).

Primary and Secondary Education						
	Schools		Students		Teachers	
	boys	girls	boys	girls	male	female
Primary	86	27	50230	19656	-	-
Secondary	41	14	11191	461	-	-
Total	127	41	61421	20117	1704	378
	168		81538		2082	

Source: CSO Afghanistan Statistical Yearbook 2006

Primary schools are located in-village for 35% of students, secondary schools for more than one-fifth of students and high schools for only 6% of students. Four out of five students have to travel less than five kilometers to reach their closest primary schools and two-thirds of student have to travel up to the same distance to reach their nearest secondary schools.

## E. Health

Ensuring the availability of basic health and hospital services, and developing human resources in the health sector is essential to reduce the incidence of disease, increase life expectancy and enable the whole population to participate in sustainable development. A basic infrastructure of health services exists in Logar province. In 2005 there were 27 health centers and 3 hospitals with a total of 137 beds there were also 44 doctors and 95 nurses

## Logar

employed by the Ministry of Health working in the province which represented a 57% increase in the number of doctors (up from 28) but a 16% decrease in the number of nurses (down from 113) since 2003. The province also had 156 pharmacies. The major health facilities in the province identified in 2007 are shown in the following table:

<b>Health Services (Hospitals by Districts)</b>	
<b>Name</b>	<b>Location</b>
Provincial hospital	Pul Alam
District Hospital	Bara ki Barak
District Hospital	Mohammad Agha

<b>Health Services (Clinics by Districts)</b>	
<b>Name</b>	<b>District</b>
Basic health clinic	Pul alam
Basic health clinic	Bara ki Barak
Basic health clinic	Charkh
Basic health clinic	Khoshi
Basic health clinic	Mohammad Agha
Basic health clinic	Kharwar
Basic health clinic	Azrah

**Source: UNAMA**

The majority of communities do not have a health worker permanently present in their community. Sixty five percent of men's shura and 75% of women's shura reported that there was no community health worker present and both groups most commonly said that their nearest health facility is basic health center or clinic without beds. Health centers are located in-village for a little more than one-tenth of the population while dispensaries are located in-village for one-sixth of population. More often than not people seeking medical attention must travel between five to tens kilometers to get it; more than 70% for health centers and more than three persons out of four for dispensaries.

## F. Social Protection

Building the capacities, opportunities and security of extremely poor and vulnerable Afghans through a process of economic empowerment is essential in order to reduce poverty and increase self-reliance. The level of economic hardship in Logar is reasonably low. More than one-fifth (22%) of the households in the province report having problems satisfying their food needs at least 3 – 6 times a year, and about the same number of households (23%) faced this problem up to three times a year, as the following table shows

<b>Problems satisfying food need of the household during the last year</b>					
	<b>Never</b>	<b>Rarely (1-3 times)</b>	<b>Sometimes (3-6 times)</b>	<b>Often (few times a month)</b>	<b>Mostly (happens a lot)</b>
<b>Households (%)</b>	40	23	22	2	13

**Source: NRVA 2005**

More than a quarter (27%) of the population in the province is estimated to receive less than the minimum daily caloric intake necessary to maintain good health. In the whole province around half (45%) of the population has low dietary diversity and poor or very poor food consumption as shown below

## Logar

Food consumption classification for all households				
	Low dietary diversity		Better dietary diversity	
Households (%)	Very poor food consumption	Poor food consumption	Slightly better food consumption	Better food consumption
Rural	11	34	33	22
Total	9	36	32	23

Source: NRVA 2005

In 2005, 20% of the population of Logar province received allocations of food aid, which reached a total of 6484 beneficiaries. In addition, of the 34% of households who reported taking out loans, more than half (54%) said that the main use of their largest loan was to buy food. In the same year more than one-third (37%) of households in the province reported feeling that their economic situation had got worse or much worse compared to a year ago, and a further third (32%) felt that it had remained the same, as the following table shows:

Comparison of overall economic situation compared to one year ago					
	Much worse	Worse	Same	Slightly better	Much better
Households (%)	18	19	32	28	3

Source: NRVA 2005

In 2005, around one-third (30%) of all households in the province reported having been negatively affected by some unexpected event in the last year which was beyond their control. Rural households were slightly less vulnerable to such shocks, with 25% of households affected. People living in rural areas were most vulnerable to natural disasters and financial problems followed by shocks related to agriculture and drinking water as the following table shows:

Households experiencing shocks in the province (%)			
Types of shocks	Rural	Urban	Average
Drinking water	15	-	13
Agricultural	16	-	22
Natural disaster	28	-	26
Insecurity	0	-	0
Financial	24	-	22
Health or epidemics	1	-	1

Source: NRVA 2005

Of those households affected, over three-quarters (76%) reported that they had not recovered at all from shocks experienced in the last 12 months and around one-fifth (19%) said they had recovered only partially

## G. Governance, Law and Human Rights

Establishing and strengthening government institutions at the central and sub-national levels is essential to achieve measurable improvements in the delivery of services and the protection of rights of all Afghans

*No relevant data analysed at provincial level available from national sources has been identified in this area.*

## H. Security

Ensuring a legitimate monopoly on force and law enforcement that provides a secure environment for the fulfillment of the rights of all Afghans is essential to ensure freedom of

## Logar

movement for people, commodities and ideas, and to promote social and economic development. A recent assessment made by the UNAMA reported that the security situation in Logar province is not good although it is stable in some districts. The biggest risk is anti personnel mines for military forces and attacks by opposition groups operating during the night.

**Profile compiled by NABDP / MRRD**

## Information Sources

**Afghanistan Statistical Yearbook 2006**, Central Statistics Office

**Geography:** Area

**Demography and Population:** Rural and Urban population

**Institutional Framework:** Total Government employees

**Economic Governance & Private Sector Development:** Agricultural cooperatives, members, land, surplus, capital

**Education:** Primary and secondary schools, students and teachers, Higher education faculties, total students, first year students and graduates, Students in university dormitories, Vocational high schools, staff, students and graduates, Teacher training institutes, students and graduates.

**Health:** Number of Health centers, Hospitals, beds, Doctors, Nurses, Pharmacies.

**Social Protection:** Allocations of food aid,

**Socio Economic and Demographic Profiles (per province)**, 2003, Central Statistics Office/ UNFPA

**Geography:** Topography, No of Districts, Provincial capital – population

**Demography and Population:** Population by district, Number of households, Main Languages Spoken

**Infrastructure and Natural Resources :** Road types (analysis by Afghanistan Institute for Rural Development)

**Economic Governance & Private Sector Development:**– Industrial crops, small industries and handicrafts

**Education:** Distance from educational services

**Health:** Distance from Health Services

**The National Risk and Vulnerability Assessment 2005**, Ministry of Rural Rehabilitation and Development and the Central Statistics Office, June 2007

**Demography and Population:** Average household size

**Infrastructure and Natural Resources :** Use of safe drinking water, Travel time to drinking water, Access to safe toilet facilities, Toilet types, Household access to electricity, Access to public electricity

**Economic Governance & Private Sector Development:** Source of household revenue, Households taking out loans, loan investment in economic activity

**Agriculture and Rural Development:** Most important field crops and garden crops, Fertilizer use and type, Access to irrigated and rainfed land, Ownership of livestock and poultry

**Education:** Literacy rate overall and for population 15 to 24, school enrolments

**Health:** Availability of community health workers, closest type of health facility

**Social Protection:** Problems satisfying food needs, Population receiving less than minimum recommended daily caloric intake, dietary diversity & food consumption, Comparison of economic situation with 12 months ago, Loan use for food and medical expenses, Vulnerability to shocks, Kinds of shocks , Recovery from shocks

**National Multi sectoral Assessment on Kuchi**, Frauke de Weijer, May 2005

**Demography and Population:** Kuchi population Winter and Summer

**Education:** Literacy rate for Kuchi, School attendance for Kuchi (summer / winter)

**UNDSS Provincial Assessments or UNAMA Provincial profiles**, Supplied by UNAMA

**Geography:** MAP , Location and description,

**Demography and Population:** Major ethnic groups and tribes,

**Institutional Framework:** Line Department offices,

**Donor Activity:** UN agencies and projects, IO/NGO agencies and projects

**Infrastructure and Natural Resources :** Road Travel times, Mobile Network Coverage

**Economic Governance & Private Sector Development:** General economic profile, Major industries/ commercial activities

**Health:** Health facilities

**Security:** Assessment of the security situation, Factors of insecurity

## Logar

### **Information supplied by United Nations Assistance Mission to Afghanistan (UNAMA)**

*Provincial Development, Provincial Budgeting and Integration of the Provincial Development Plans into the Afghan National Development Strategy (ANDS). Draft Discussion Paper for the ADF)*

**Institutional Framework :** Assessment of functioning of PDC

### **Information supplied by Ministries**

**Institutional Framework:** PDC structure (*Ministry of Economy*), DDAs and CDCs (*Ministry of Rural Rehabilitation and Development*)

**Donor Activity:** NGO facilitating partners for NSP (*Ministry of Rural Rehabilitation and Development*)