

LAGHMAN

1. PROVINCIAL PROFILE

1.1. GENERAL INFORMATION



Source : UNDSS Provincial Assessment provided by UNAMA

I. GENERAL INFORMATION

A. Geography

Laghman Province is connected to six other Provinces: in the south it borders Nangarhar Province, in the east Kunar Province, in the north-east Nuristan, in the north-west Parwan Province, in the west Kapisa Province and in the south west Kabul Province. The province covers an area of 3408 km². More than half of the province is mountaneous or semi mountainous terrain (55.4%) while around forty percent of the area is made up of flat land (40.9%), as the following table shows:

	Topography type					
	Flat	Mountainous	Semi Mountainous	Semi Flat	Not Reported	TOTAL
%	40.9%	42.2%	13.2%	3.2%	.5%	100.0%

Source: CSO/UNFPA Socio Economic and Demographic Profile

The province is divided into 5 Districts. The provincial capital is Mehtarlam which has a population of about 112,856 inhabitants.

B. Demography and Population

Laghman has a total population of 382,280. There are 60,048 households in the province and households on average have 6 members. The following table shows the population by district.

Population by District			
	Number of males	Number of females	Total population
Mehtarlam_ Laghman Centre	57920	54936	112856
Qarghavi	36120	34548	70688

Alinigar	46033	43683	89716
Alishang	34785	33368	68153
Dawlat Shah	21025	19862	40887
Total	195887	186397	382280

Source: CSO/UNFPA Socio Economic and Demographic Profile

Around 99% of the population of Laghman lives in rural districts while 1% lives in urban areas. Around 51% of the population is male and 49% is female. The major ethnic groups living in Laghman province are Sapi, Tajik, Nasir, Ibrahimkhail, Hoodkhail, Nuristani, Kharoti, Jabarkhail, Pashayee, Niazi followed by Pashtoons and Gujjars. Pashto is spoken by 345 villages out of 620 and around 58% of the population. The second most frequent language is Pashaie spoken in 210 villages by a third of the population. Dari is spoken in 57 villages, representing just over 9% of the population.

Laghman province also has a population of Kuchis or nomads whose numbers vary in different seasons. In winter 94,020 individuals, or around 4% of the overall Kuchi population, stay in Laghman living in 40 communities. Of these communities 2% are short-range migratory, 1% is settled, and 97% are long-range migratory. Amongst migratory Kuchi, all households are fully migratory which means no families remain behind in Laghman during the summer. The most important summer area for the short range migratory Kuchi is in Dawlat Shah District of Laghman province. The Kuchi population in the summer is 3,670 individuals.

C. Institutional framework

In total the government employs 5911 people in Laghman province. As the table below shows, Two thirds (66%) of these are employees and one third (33%) are contract workers. Around four in five (79%) government workers are men and one in five (21%) are women.

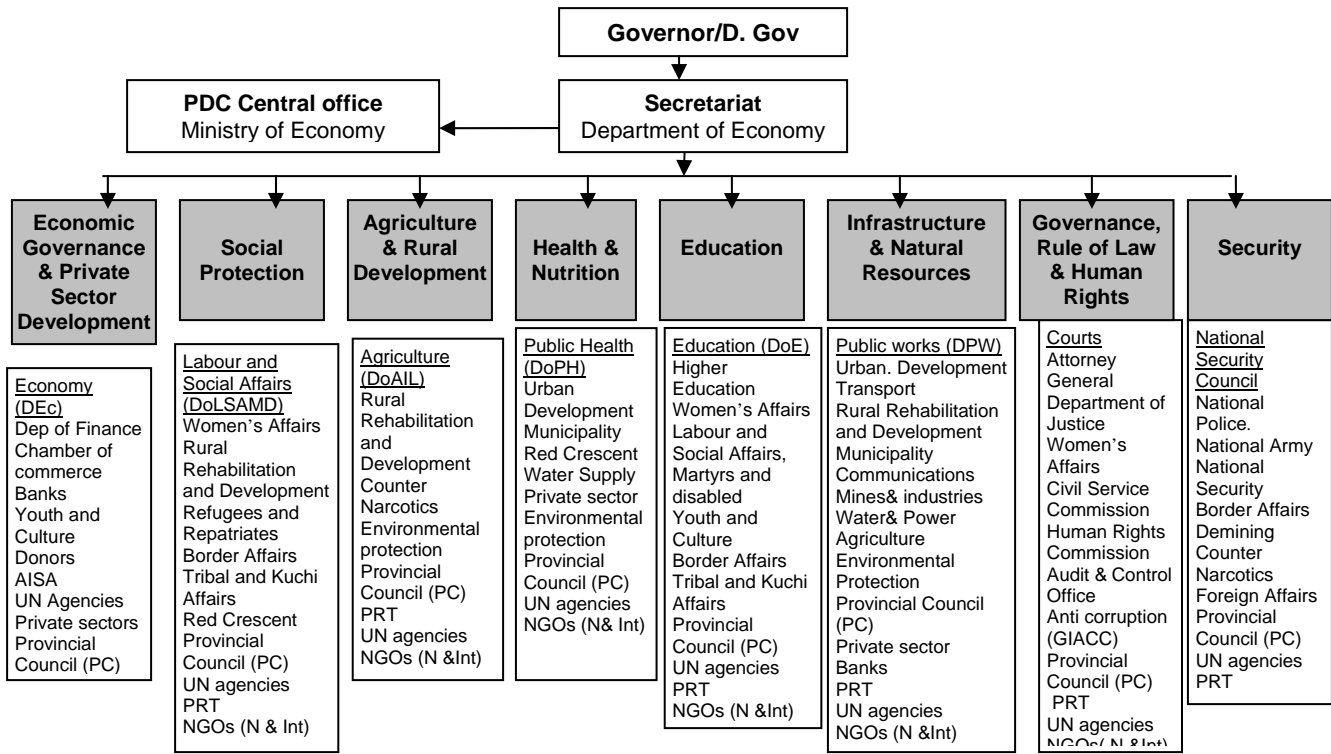
Number of people employed by government in Laghman province			
	Male	Female	Total
Contract workers	1939	14	1953
Employees	2716	1242	3958
Total Workers	4655	1256	5911

Source: CSO Afghanistan Statistical Yearbook 2006

Each province has a Provincial Development Committee (PDC) which is responsible for overseeing the progress made on implementation of the Provincial Development Plan, and which will lead the provincial development planning process in the future. The PDC involves all government line departments and other key stakeholder groups involved in development activities in the province. It also has a number of working groups devoted to different sectors, each of which should be chaired by the director of the core responsible line department. The structure of the PDC and its associated working groups approved by the Ministry of Economy for use in all provinces is shown in the diagram below:

Provincial Development Committee Structure endorsed by Ministry of Economy

Provincial Development Plan, Laghman : Provincial Profile



Source: Ministry of Economy

The Provincial Development Committee in Laghman province was formed in September 2006. In April 2007 UNAMA made the following assessment of the PDC in Laghman:

UNAMA assessment of Provincial Development Committee in Laghman	
Supporting Agencies	Functioning Status of PDC meetings
UNAMA, Other UN agencies, PRT, USAID, US State Department Rep., DAI, EC and GTZ participate in the meetings and provide support and input to PDC	Meetings take place regularly on the month basis and the governor actively participating in all meetings. 12 Technical working groups have been established and they meet regularly.

Source: UNAMA, April 2007

Laghman also has a number of other bodies which play an active role in development planning at the local level. There are 482 Community Development Councils in the province which are active in development planning at the community and village level. The following table shows the number of CDCs active in each district:

CDCs by District	
District	Number of CDCs
Mehtarlam	62
Qarghayi	42
Alingar	156
Dawlat Shah	73
Alishing	149
TOTAL	482

Source: MRRD, National Solidarity Programme (NSP)

C. Donor Activity

In addition to the activities of government agencies, a number of national and international organizations play an active role in promoting development in the province. There are at least 6 national and international Non-Governmental Organisations (NGOs) supporting development projects across a range of sectors in the province, as the following table shows:

IO/ NGO Operations in Laghman province		
Organization	Project	Location
AIM (Aide Medicale Internationale)	Health	Covers all the provincial districts and its main office is in JAA
DACAAR	Water and Sanitation, Hygiene, Education, NSP	Mihtarlam and its activities cover all the districts
GTZ/PAL	Agriculture	JAA, covers all the districts of Laghman
IMC (International Medical Corps)	Health, Health training, Community Based health centers	Mihtarlam and covers all the districts
IRC	Education, Health, Sanitation, Protection and Vocational Training	Has no office, covers all the districts
MADERA	Agriculture, civil Engineering Credit, Forestry Livestock, NSP	Mihtarlam and covers all the districts

Source: UNAMA

II. CURRENT STATE OF DEVELOPMENT IN THE PROVINCE

A. Infrastructure and Natural Resources

The provision of basic infrastructure such as water and sanitation, energy, transport and communications is one of the key elements necessary to provide the building blocks for private sector expansion, equitable economic growth, increased employment and accelerated agricultural productivity. In Laghman province, on average 39% of households use safe drinking water. More than four households in five (84%) have direct access to their main source of drinking water within their community, however one in six households (16%) has to travel for up to an hour to access drinking water as the table below shows:

Time required accessing main source of drinking water				
	In community	Less than 1 hour	1-3 hours	3-6 hours
%	84	16	0	0

Source: NRVA 2005

On average only 4% of households have access to safe toilet facilities. The following table shows the kinds of toilet facilities used by households in the province:

Toilet facilities used by households						
	None/ bush open field/	Dearan / Sahrah (area in compound but not pit)	Open pit	Traditional covered latrine	Improved latrine	Flush latrine
%	6	9	9	72	4	0

Source : NRVA 2005

On average 13% of households in Laghman province have access to electricity however none of this is public electricity.

The transport infrastructure in Laghman is reasonably well developed, with nearly two thirds (60.7%) of roads in the province able to take car traffic in all seasons and 10.7% able to take car traffic in some seasons. However, in a more than a quarter of the province (28.3%) there are no roads at all as shown in the following table:

Road Types				
District	Cars all season	Cars some seasons	No roads	Not Reported
Mehtarlam_ Laghman Centre	82.9%	5.1%	12.0%	.0%
Qarghavi	69.3%	12.9%	17.9%	.0%
Alinigar	64.6%	9.7%	23.9%	1.8%
Alishang	39.9%	13.8%	46.4%	.0%
Dawlat Shah	28.6%	14.3%	57.1%	.0%
TOTAL	60.7%	10.7%	28.3%	.3%

Source: CSO (analysis by AIRD)

The following table indicates road travel times between the provincial capital, Mehtarlam and the major district centres in the province, and other key provincial centres in the region.

Road Travel Times			
From	To	Time	Road Condition
Jalalabad	Mehtarlam	45-60 minutes	Good-Fair; 50% paved – 50% gravel
Mehtarlam	Alingar	45 minutes	Fair; gravel
Mehtarlam	Alishing	60 minutes	Fair, gravel
Mehtarlam	Dawlat Shah	1 ½ -2 hours	Fair-Poor, gravel/dirt
Jalalabad	Qarghayi	30-45 minutes	Good-Fair, paved/gravel

Source: UNAMA

As far as telecommunications is concerned, the Roshan and AWCC networks cover Qarghayi and Mehtarlam and some parts of Alishing and Alingar districts. DIGITAL covers Mehtarlam and has contact with Alishing and Alingar District HQs. The area of coverage is currently being increased by all providers.

B. Economic Governance and Private Sector Development

Creating the conditions in which a dynamic and competitive private sector can flourish, is key to promoting economic growth, employment creation and poverty reduction. Along the Alishing and Alingar rivers and streams are fertile agricultural lands at ground level or man-made terraces with extensive irrigation channels. Poppy growing is widespread, although the area devoted to the crop varies from place to place. In terms of industry the province is characterised by production of fruit and nuts, agriculture, animal husbandry, mining of gems, timber cutting and trade, small shopkeepers, and an ice factory in Mehterlam city.

Non-farm Labour provides a source of revenue for more than a third (39%) of households in Laghman province and another third (36%) of households derive income from trade and services. One in five households (21%) own or manage agricultural land or garden plots in the province, and agriculture accounts for income of nearly one in three households (29%) as the following table shows:

Sources of income reported by households			
Source of income	Rural (%)	Urban (%)	Total (%)
Agriculture	29	-	29

Livestock	17	-	17
Opium	0	-	0
Trade and Services	36	-	36
Manufacture	0	-	0
Non-Farm Labour	39	-	39
Remittances	9	-	9
Other	3	-	3

Source: NRVA 2005

In 2005 there were 27 Agricultural cooperatives active in Laghman involving 2706 members. This was nearly fifty percent more people than in 2003 when the figure was only 1906 members. In 2005 agricultural cooperatives controlled a total of 1919Ha of land and achieved a surplus of produce for sale of 30,000 tons. As a result of this each member held a share in the capital of the cooperative to the value of 202,400Afs.

Unlike other provinces, Laghman houses a relatively large number of villages that grow industrial crops. Cotton, sugar, sesame, tobacco, olives and sharsham are grown in a total of 443 villages. Around half of these (47%) of these grow cotton – 204 out of 433, and Cotton growers and sugar cane growers account for 88 percent of all the villages producing industrial crops. These villages are mostly concentrated in the Mehtarlam and Qarghayee districts.

On the other hand, the sector of small industries is very weak in Laghman province: Only 21 of the 620 villages have significant production in this area – five in honey and six in dried sugar. Alishing is the one district to be engaged in a wide range of small industries and of the 21 villages involved in this sector, 12 are located in this district. In Laghman province, handicrafts are produced in an even smaller number of villages – only 13, five of which specialize in jewelry (all situated in Qarghayee), and four in rugs.

C. Agriculture and Rural Development

Enhancing licit agricultural productivity, creating incentives for non-farm investment, developing rural infrastructure, and supporting access to skills development and financial services will allow individuals, households and communities to participate licitly and productively in the economy. the most important field crops produced in Laghman Province are wheat and rice.

In Laghman province all households with access to fertilizer use this on field crops. The main types of fertilizer used by households in the province are shown in the following table:

Main Types Of Fertilizer Used By Households					
Human	Animal	Urea		DAP	
%	%	%	Average Kg per Household	%	Average Kg per Household
10	77	96	140.0 Kg	97	133.1Kg

Source: NRVA 2005

On average 93% of households in the province have access to irrigated land, and one percent of has access to rainfed land as the table below shows:

Households (%) access to irrigated and rainfed land			
	Rural	Urban	Average
Access to irrigated land	93	-	93
Access to rainfed land	1	-	1

Source : NRVA 2005

Eighty three percent of rural households in the province own livestock or poultry. The most commonly owned livestock are cattle, poultry and goats as the following table shows:

Households (%) owning poultry and livestock				
Livestock	Kuchi	Rural	Urban	Average
Cattle	-	82	-	27
Oxen	-	13	-	4
Horses	-	0	-	0
Donkey	-	12	-	4
Camel	-	0	-	0
Goats	-	37	-	12
Sheep	-	6	-	2
Poultry	-	66	-	22

Source: NRVA 2005

D. Education

Ensuring good quality education and equitable access to education and skills are some of the important ways to raise human capital, reduce poverty and facilitate economic growth. The overall literacy rate in Laghman province is 14%, however, while around one in five men are literate (22%), this is true for just one in twenty women (5%). In the population aged between 15 and 24 the situation for men is better with 28% literacy, whereas for women the figure decreases to just 3.3%. The Kuchi population in the province has particularly low levels of literacy with just 0.2% of men and 0.2% of women able to read and write.

On average around half (48%) of children between 6 and 13 are enrolled in school, however the figure is a little more than half of boys (55%) and 39% of girls. Amongst the Kuchi population, one percent of boys and girls attend school in Laghman during the winter months; however no Kuchi children attend school in the province during the summer.

Overall there are 184 primary and secondary schools in the province catering for 118,100 students. Boys account for 66% of students and 67% of schools are boys' schools. In 2005 there were 2615 teachers working in schools in the Laghman province, less than one tenth of whom are women (8%).

Primary and Secondary Education						
	Schools		Students		Teachers	
	Boys	girls	boys	girls	male	female
Primary	60	35	63398	38918	-	-
Secondary	63	26	14389	1395	-	-
Total	123	61	77787	40313	2405	210
	184		118100		2615	

Source : CSO Afghanistan Statistical Yearbook 2006

A substantial proportion of the population has to travel more than 10kms to reach their nearest schools. 16.8% for primary schools, 28.3% for secondary schools, 37% for high schools, and 41.1% for rural school,

There is also a Teacher Training Institute in which in 2005 had 191 students, 183 68% of whom were men and 8 32% women. 23 new teachers graduated from Laghman teacher training institute in 2005, all of them were men.

E. Health

Ensuring the availability of basic health and hospital services, and developing human resources in the health sector is essential to reduce the incidence of disease, increase life expectancy and enable the

whole population to participate in sustainable development. A basic infrastructure of health services exists in Laghman province. In 2005 there were 23 health centers and 5 hospitals with a total of 236 beds. There were also 37 doctors and 92 nurses employed by the Ministry of Health working in the province, which represented around half the number of doctors (down from 66) and three quarters of the number of nurses (down from 119) in 2003. The major health facilities in the province identified in 2007 are shown in the following table:

Health Services in Laghman province		
Hospitals		
Name	Location	Notes
Laghman Public Health Hospital	Mihtarlam Center, Alikhyl area	
District Hospital	Mihtarlam Center	
Clinics		
Name	Location	
Community Health Center (CHC)	Mihtarlam City	Supported by IMC
Basic Health Center (BHC)	Deh Hashim, Mihterlam	IFRC
Anti TB Center	Shahr-I-Naw, Mihtarlam	MoH/NCA/WHO
BHC	Shamati Village, Mihtarlam	AMI
BHC	Alishang Village, Mihtarlam	AMI
BHC	Katal Village, Mihtarlam	AMI
BHC	Omarzayi Village, Mihtarlam	AMI
CHC	Badpash Spin Qala, Mihtarlam	AMI
CHC	Dehmazang, Qarghayi	IbnSian
Mobile Clinic	Ghundi, Qarghayi	IbnSina
BHC	Kanda Village, Qarghayi	IbnSina
CHC	Charbagh, Qarghayi	IbniSina
BHC	Kas Aziz Khan, Qarghayi	IbnSina
BHC	Kah Kac, Qarghayi	IbnSina
CHC	Shahi Village, Alingar	IbnSina
BHC	Kachur Salab Village, Alingar	IbnSina
BHC	Shekh Sahib Village, Alingar	IbnSina
BHC	Lawkar Village, Alingar	IMC
BHC	Alukhel, Alingar	IbnSina
BHC	Khorak Village, Alingar	IbnSina
CHC	Alishang HQ	AMI
BHC	Alishang, Islamabad Village	AMI
BHC	Alishang, Qala-I-Najeel	AMI
CHC	Dawlat Shah HQ	AMI
CHC	Dawlat Shah, Paytak Village	AMI
Note: DHC-District Health Center CHC-Comprehensive Health Center BHC-Basic Health Center		

Source : UNAMA

The province also has 156 pharmacies of which 154 are owned privately and 2 are run by the government.

The majority of communities do not have a health worker permanently present in their community. Around three quarters of men's shura (73%) and women's shura (76%) in the province reported that there was no community health worker present, and both groups most commonly said that their closest health facility is a clinic without beds. Out of 620 villages, only 22 have a health centre within their boundaries, and only 27 have a dispensary. Drugstores exist in 44 villages. Accessibility to healthcare is rather difficult for a large proportion of the population, and just under two thirds of residents have to travel over 5kms to get medical attention (63.5%).

F. Social Protection

Building the capacities, opportunities and security of extremely poor and vulnerable Afghans through a process of economic empowerment is essential in order to reduce poverty and increase self-reliance. The level of economic hardship in Laghman is reasonably high. Three quarters (76%) of households in the province report having problems satisfying their food needs at least 3 – 6 times a year and a further 13% of households face this problem up to three times a year, as the following table shows:

Problems satisfying food need of the household during the last year					
	Never	Rarely (1-3 times)	Sometimes (3-6 times)	Often (few times a month)	Mostly (happens a lot)
Households (%)	6	13	76	1	4

Source: NRVA 2005

More than two fifths (42%) of the population in the province is estimated to receive less than the minimum daily caloric intake necessary to maintain good health and around four fifths (81%) of the population has low dietary diversity and poor or very poor food consumption as shown below:

Food consumption classification for all households				
Households (%)	Low dietary diversity		Better dietary diversity	
	Very poor food consumption	Poor food consumption	Slightly better food consumption	Better food consumption
Rural	34	46	19	0
Total	33	48	18	2

Source : NRVA 2005

In 2005, 25% of the population of Laghman province received allocations of food aid, which reached a total of 181965 beneficiaries. In addition, of the 8% of households who reported taking out loans, Around one third (32%) said that the main use of their largest loan was to buy food and a further 27% used the money to cover expenses for health emergencies. In the same year half the households (51%) in the province reported feeling that their economic situation had got worse compared to a year ago, and a quarter felt that it had remained the same (25%), as the following table shows:

Comparison of overall economic situation compared to one year ago					
	Much worse	Worse	Same	Slightly better	Much better
Households (%)	5	46	25	22	1

Source : NRVA 2005

In 2005, four in five households in the province (84%) reported having been negatively affected by some unexpected event in the last year, which was beyond their control. People were most vulnerable to shocks related to financial problems, natural disasters and drinking water as the following table shows:

Households experiencing shocks in the province (%)			
Types of shocks	Rural	Urban	Average
Drinking water	53	-	53
Agricultural	37	-	37
Natural disaster	56	-	56
Insecurity	37	-	37
Financial	66	-	66
Health or epidemics	1	-	1

Source : NRVA 2005

Of those households affected, over three quarters (77%) reported that they had not recovered at all from shocks experienced in the last 12 months and around than one fifth said they had recovered only partially (21%).

G. Governance, Law and Human Rights

Establishing and strengthening government institutions at the central and sub-national levels is essential to achieve measurable improvements in the delivery of services and the protection of rights of all Afghans

No relevant data analysed at provincial level available from national sources has been identified in this area.

H. Security

Ensuring a legitimate monopoly on force and law enforcement that provides a secure environment for the fulfilment of the rights of all Afghans is essential to ensure freedom of movement for people, commodities and ideas, and to promote social and economic development. A recent assessment made by the United Nations Department of Safety and Security (UNDSS) highlighted the following key factors of insecurity in the province:

Factors of Insecurity	
Illegally Armed Groups (IAGs)	In spite of the implementation of the Disarmament of Illegally Armed Groups (DIAG) program in the province there are still large numbers of IAGs in the Alishang, Alingar, Qarghayi and Dawlat Shah districts and their presence can always pose a threat to security. Some of these armed groups have ties with Anti Government Elements, specifically those in the Dawlat Shah area.
Anti Government Elements (AGEs)	Anti government elements are active in the valleys of Alingar, Alishang, Dawlat Shah and Mehtarlam. They can pose a threat to security by the use of improvised explosive devices (IED), firing rockets and missiles, ambushes, and distributing night letters threatening the population. These groups are always mobile in the area.
Criminality and Organised Crime	The level of crime is still high in Laghman. Often crime is caused by personal enmities and revenge attacks. There are gangs of criminals in the valleys of Dawlat Shah, Alishang and Alingar involved in smuggling precious stones and timber, killings, kidnappings and so on.
Narcotics	Although poppy cultivation has been reduced by nearly 10 percent, Laghman remains one of the smuggling centres for heroin. Smugglers from Shinwar, Kabul and Kapisa still commute to Laghman to buy heroin there.

Source : UNAMA 2007

Profile compiled by NABDP / MRRD

Information Sources

Afghanistan Statistical Yearbook 2006, Central Statistics Office

Geography: Area

Demography and Population: Rural and Urban population

Institutional Framework: Total Government employees

Economic Governance & Private Sector Development: Agricultural cooperatives, members, land, surplus, capital

Education: Primary and secondary schools, students and teachers, Higher education faculties, total students, first year students and graduates, Students in university dormitories, Vocational high schools, staff, students and graduates, Teacher training institutes, students and graduates.

Health: Number of Health centers, Hospitals, beds, Doctors, Nurses, Pharmacies.

Social Protection: Allocations of food aid,

Socio Economic and Demographic Profiles (per province), 2003, Central Statistics Office/ UNFPA

Geography: Topography, No of Districts, Provincial capital – population

Demography and Population: Population by district, Number of households, Main Languages Spoken

Infrastructure and Natural Resources : Road types (analysis by Afghanistan Institute for Rural Development)

Economic Governance & Private Sector Development:– Industrial crops, small industries and handicrafts

Education: Distance from educational services

Health: Distance from Health Services

The National Risk and Vulnerability Assessment 2005, Ministry of Rural Rehabilitation and Development and the Central Statistics Office, June 2007

Demography and Population: Average household size

Infrastructure and Natural Resources : Use of safe drinking water, Travel time to drinking water, Access to safe toilet facilities, Toilet types, Household access to electricity, Access to public electricity

Economic Governance & Private Sector Development: Source of household revenue, Households taking out loans, loan investment in economic activity

Agriculture and Rural Development: Most important field crops and garden crops, Fertilizer use and type, Access to irrigated and rainfed land, Ownership of livestock and poultry

Education: Literacy rate overall and for population 15 to 24, school enrolments

Health: Availability of community health workers, closest type of health facility

Social Protection: Problems satisfying food needs, Population receiving less than minimum recommended daily caloric intake, dietary diversity & food consumption, Comparison of economic situation with 12 months ago, Loan use for food and medical expenses, Vulnerability to shocks, Kinds of shocks , Recovery from shocks

National Multi sectoral Assessment on Kuchi, Frauke de Weijer, May 2005

Demography and Population: Kuchi population Winter and Summer

Education: Literacy rate for Kuchi, School attendance for Kuchi (summer / winter)

UNDSS Provincial Assessments or UNAMA Provincial profiles, Supplied by UNAMA

Geography: MAP , Location and description,

Demography and Population: Major ethnic groups and tribes,

Institutional Framework: Line Department offices,

Donor Activity: UN agencies and projects, IO/NGO agencies and projects

Infrastructure and Natural Resources : Road Travel times, Mobile Network Coverage

Economic Governance & Private Sector Development: General economic profile, Major industries/ commercial activities

Health: Health facilities

Security: Assessment of the security situation, Factors of insecurity

Information supplied by United Nations Assistance Mission to Afghanistan (UNAMA)

Provincial Development, Provincial Budgeting and Integration of the Provincial Development Plans into the Afghan National Development Strategy (ANDS). Draft Discussion Paper for the ADF)

Institutional Framework : Assessment of functioning of PDC

Information supplied by Ministries

Institutional Framework: PDC structure (*Ministry of Economy*), DDAs and CDCs (*Ministry of Rural Rehabilitation and Development*)

Donor Activity: NGO facilitating partners for NSP (*Ministry of Rural Rehabilitation and Development*)